

# THE DEVELOPMENT AND VALIDATION OF THE RP-HPLC METHOD FOR THE DETERMINATION OF NAPUMETONE IS A STRAIGHTFORWARD AND PRECISE PROCESS

Akhil Mangal,

Research Scholar, School of Pharmacy,

Glocal University Saharanpur (U.P)

**Prof. (Dr.) S.K. Sharma,**

Research Supervisor, School of Pharmacy,

Glocal University Saharanpur (U.P)

**Abstract:** Since there are a growing number of drugs and drug combinations available on the market, it is necessary to create analytical instruments for quality control, which makes NSAIDs a very popular class of therapy for pain and inflammation. It is necessary to design the procedures in a way that minimizes design time while yielding the most reliable and accurate results. The USFDA-approved solid oral dosage forms of naproxenone are used in the current study's combination dose form. Creating a new analytical technique that will improve analysis's accuracy, cost, and time consumption. The measurement of nabumetone (NAB) in prescription medications using a precise and accurate FIA technique is explained. Based on the most effective carrier solvent solution, which was methanol:water (35:65% v/v), the developed method was implemented. This solvent was used to produce the sample solution ( $4.7 \times 10^{-6}$  M NAB), which was then injected into the instrumental system at a flow rate of 1 ml/min. The drug was quantified on an Agilent Zorbax Bonus RP (250 x 4.6 mm, 5 $\mu$ ) column using a mobile phase consisting of methanol: water (35:65, % v/v) at a flow rate of 1 ml/min. The signals were detected using a UV detector at 270 nm RP-HPLC leave-taking. Using a DAD detector at 200–400 nm, quantification was achieved based on peak area and linear calibration curves for drug concentrations between 60 and 140  $\mu$ g/ml. Nabumetone had a retention period of 2.88 minutes. The process had been useful for creating medicinal formulations one after the other. There was no introduction of chromatographic incursion from the tablet components. The linearity, recovery, and specificity of the devised approach were confirmed. In accordance with ICH rules, the intra- and inter-day precision and accuracy results fell within the recognition range.

**Keywords:** Nabumetone, NSAID, RP-HPLC, Method validation.

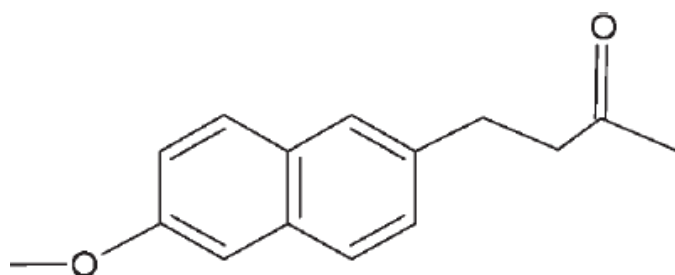
## 1. INTRODUCTION

Nabumetone <sup>[1]</sup> is non acidic prodrug, chemically, 4-(6-methoxy-2-naphthyl)-2-butanone <sup>[1]</sup>,

NSAID of 6-Phenylhexanoic acid group accustomed to contend ache and inflammation induced by rheumatism.<sup>[1]</sup> The literature survey discloses that colorimetric<sup>[3]</sup> and some chromatographic systems had been reported for the analytical assay of nabumetone in various fluids like biological fluids and in medicinal preparations besides alone or other drugs.<sup>[5-6]</sup>

According to preceding have a look at Non-Steroidal Anti-Inflammatory Drugs (NSAIDs),<sup>[2]</sup> Nabumetone's is an energetic metabolite which constrains the cyclo-oxygenase enzyme favorably blocks the interest of COX-2 (Cyclo-Oxygenase - 2). During arthritis, cyclo-oxygenase-2 complements the charge of manufacturing of endoperoxides and prostaglandins E-2 and I2 (prostacyclin) that is not directly accountable for extreme ache withinside the patients. Nabumetone (NAB) comes beneath neath a brand-new elegance of non-steroidal anti-inflammatory drug which display much less capacity for GI sheath irritancy and inhibits the feature of platelet. It suggests much less effect now no longer simplest on nephric bradykinin emission however additionally on congestive coronary heart failure (CHF) compared to different antique pills of this elegance.<sup>[4]</sup>

There are a few articles to be had describing investigative tactics for NAB. This evaluation paper describes the easy, specific and sensitive HPLC approach that is recuperated and attested (documented) technique for estimation of Nabumetone as in step with ICH (International Conference on Harmonization) guidelines. Here, we evaluation provided novel approach for the decisiveness of Nabumetone which makes use of a totally reasonably-priced solvent device on a Waters ODS C18 analytical column. This form of device primes to stepped forward preservation, very serrated and proportioned height figures and shows excellent selectivity for Nabumetone.<sup>[7]</sup>



**Figure 1. Structure of Nabumetone**

Analytical methods are classified as non-instrumental and instrumental. Different instrumental methods involve spectroscopy, chromatography, mass spectroscopy, Calorimetry, microscopy, electrochemistry, environmental analysis, forensic, crystallography, etc. The process of chromatography is applied for the application of separation, purification of the test substances. The mixture which is to be applied for

separations is placed on a stationary phase (solid or liquid), and a pure solvent which includes water or any kind of gas is permitted slowly to travel over the stationary phase, transporting the components separately according to their solubility in the pure solvent. Chromatography differs from most other physical and chemical separation processes in that two mutually incompatible phases are brought into contact; one is stationary and the other is mobile. A sample is conveyed through a column (manifold) containing a dispersed stationary phase after being put into a mobile phase. The ever-increasing number of medications and drug combinations on the market necessitates the development of analytical tools for monitoring their quality. The procedures must be developed in such a way that they take less time to design and produce the most accurate and robust results possible. The current study dosage form comprises nabumetone in solid oral dosage forms, which was recently approved by the USFDA. The goal of this project is to develop and validate a simple, precise, accurate, and cost-effective RP-HPLC technique for the estimation of nabumetone in bulk and pharmaceutical dosage forms that follows ICH recommendations.

## **2. MATERIALS AND METHODS**

### **2.1. Chemicals and reagents**

The Nabumetone changed into procured from Aadhar Life Sciences Pvt. Ltd. Other analytical reagents encompass orthophosphoric acid (OPA) of HPLC grade changed into bought from the Avantor Performance cloth India Ltd. Thane, Maharashtra. MEOH and water of HPLC grade have been bought from the Merck Specialities Pvt. Ltd., Shiv Sager Estate 'A' Worli, Mumbai. Analytical grade reagents and chemical substances have been used on this study. Fixed dose aggregate used in this test grow to be Niltis P tablets (Ipca laboratories Ltd., India) categorized to comprise 500 mg of Nabumetone.

### **2.2. Selection of wavelength:**

The pattern changed into scanned from 200-400 nm with DAD detector. The Wavelength decided on for evaluation selected changed into 270 nm on foundation of suitable depth of Nabumetone.

### **2.3. Instrumentation and Chromatographic Conditions:**

Agilent 1260 Infinity II system consisting of Compatible with conventional and ultrahigh performance LC: 1260 Infinity II Quaternary Pump and 1260 Infinity Binary Pump operate up to 600 bars, a perfect match for our Infinity Lab Poroshell 120 columns. The peaks were quantified by means of PC based Lab Advisor software. A reverse phase Agilent Zorbax Bonus-RP (250 x 4.6 mm, 5  $\mu$ ) column equilibrated with mobile phase Methanol: Water (35:65 % v/v) was used. Mobile phase flow rate was maintained at 1 ml/min and effluents were monitored at 270 nm. The temperature of the system was maintained at 30<sup>0</sup> C. The sample was injected using a 10  $\mu$ l fixed loop, and the total run time was 5 min.

**2.4. Preparation of Standard Stock Solution**

Prepare a Standard Stock Solution (SSS-I) of by adding 10 mg of Nabumetone in 10 ml volumetric flask & add 5 ml diluent (methanol: water, 50: 50 % v/v), mix for 2 minutes and make the volume to 10 ml with diluent. (Conc. of Nabumetone = 1000 µg/ml). Then add 1.0 ml of ASSS-I in 10 ml volumetric flask and add 5 ml diluent and vortex and make up the volume with diluent. (Conc. of Nabumetone = 100 µg/ml).

**2.5. Drug Product Sample Preparation for Assay: [Tablet Sample Solution (TSS)]**

10 Tablets were weighed and average weight was calculated and Tablets was crushed & mixed in mortar and pestle. Powder weight equivalent to 10 mg Nabumetone was weighed into 10 ml volumetric flask & add 5 ml diluent, sonicate for 10 minutes and make the volume to 10 ml with diluent. (Conc. of Nabumetone = 1000 µg/ml).

**2.6. Calibration of standards:**

The mobile phase and stationary phase were allowed to equilibrate until OPA by baseline was achieved. Pipette 10 mg nabumetone into a 10 ml volumetric flask from the freshly made standard stock solution. It was then diluted with the mobile phase. To reach the final concentration, 0.6, 0.8, 1.0, 1.2 and 1.4 of the solution were pipette out into a 10 ml volumetric flask, and volume was brought up to 10 ml with the mobile phase. Nabumetone (60, 80, 100, 120 and 140 g/ml). Samples were injected and peaks were recorded at 275 nm, as shown in the graph plotting drug concentration versus peak area.

**2.7. Validation of A Method for Analysis of Nabumetone:****Specificity & Assay:**

Individual samples of Nabumetone were prepared of 100 µg/ml and peaks were for identified from Retention Time. Blank was injected to ensure there is no blank peak interfering with the main analyte peaks. (Table No. 1)

**Linearity:**

The mathematical treatment of test findings acquired by analysis of samples with analyte concentrations across the specified range determines the analytical method's linearity. The area as a function of analyte concentration is visually shown. Fittings of percentage curves are calculated.

**Accuracy (recovery):**

A known amount of analyte is added in the system is used for the analysis of the accuracy. The percentage of analyte recovered by the assay is used to compute the accuracy from the test findings.

**Precision:****Intra-day precision:**

Sample solutions containing 10 mg of nabumetone three different concentration (80 µg/ml, 100 µg/ml, 120 µg/ml) nabumetone. Nabumetone were determined three times on the same day and %R.S.D. was calculated.

**Inter-day precision:**

Sample solutions containing 10 mg of Nabumetone three different concentration (80 µg/ml, 100 µg/ml, 120 µg/ml) nabumetone. Nabumetone were determined three times on the same day and %R.S.D. was calculated.

**Detection Limit:**

By using the below formula, it can be calculated

$$DL = \frac{3.3\sigma}{S}$$

Where,  $\sigma$  = the S.D. of the y-intercepts of regression lines. S = the slope of the calibration curve.

The calibration curve can be used to estimate the slope S and S.D. was used should be calculated from the y-intercepts of theregression line in the calibration curve.

**Quantitation Limit:**

It was calculated by the below formula.

$$QL = \frac{10\sigma}{S}$$

Where,  $\sigma$  = the S.D. of the y-intercepts of regression lines. S = the slope of the calibration curve.

The calibration curve can be used to estimate the slope S and S.D. was used should be calculated from the y-intercepts of the regression line in the calibration curve.

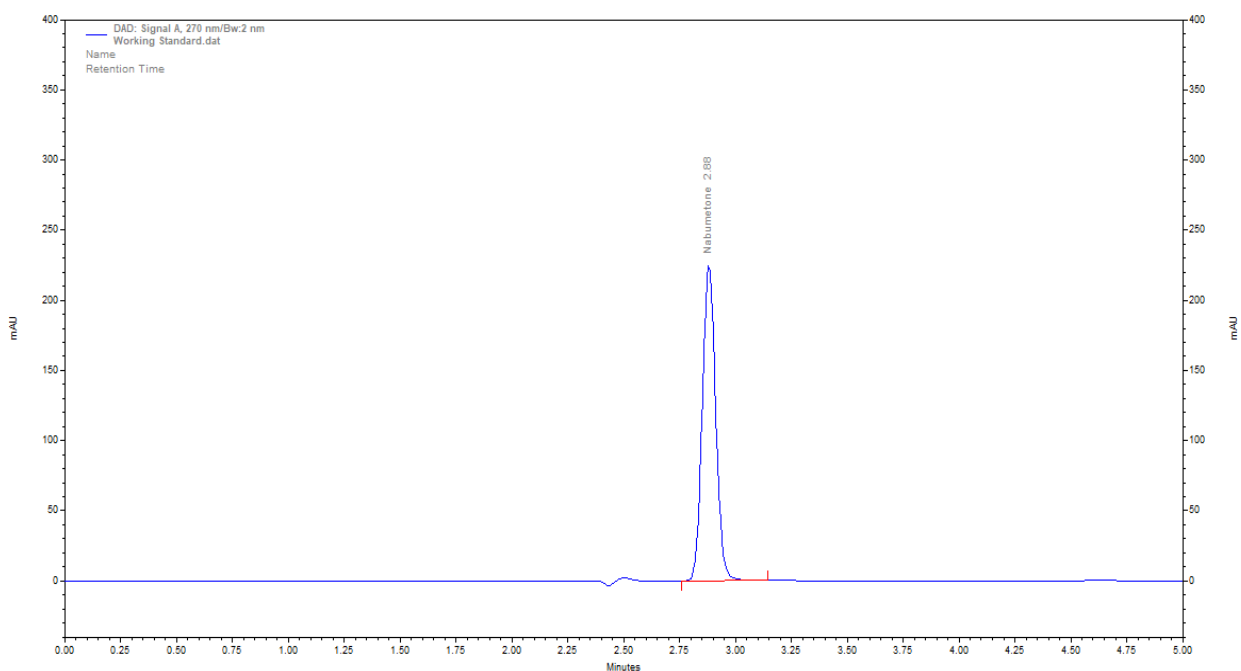
**3. RESULTS AND DISCUSSION:**

**3.1. Specificity:**

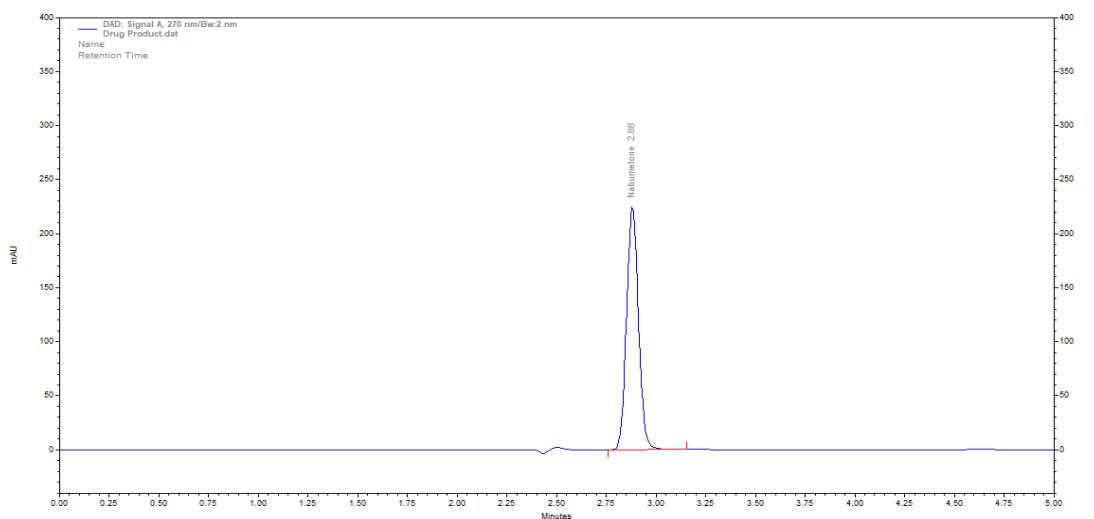
Specificity for the nabumetone as comparing to marketed formulation (Niltis 500mg Tablet, Ipca Laboratories Pvt. Ltd.) was found as mentioned in the following table no. 01 and mentioned figures 02 & 03. The % Assay of nabumetone for this developed technique was found to be 97.50.

**Table No. 1: Specificity and Assay:**

Sample (API Name)	Nabumetone
Standard Solution	1525414
Marketed Formulation	1487272
% Assay	97.50



**Fig. 02: Chromatogram of Working Standard**



**Fig. 03: Chromatogram of Drug Product**

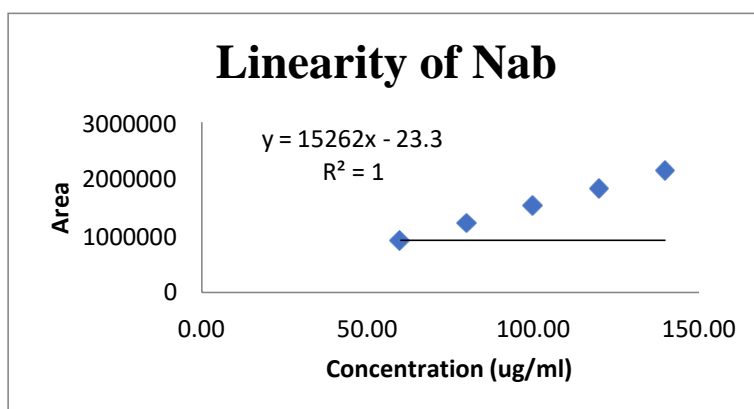
**3.2. Linearity:**

The data revealed a linear association between peak areas and concentrations in the ranges of 2-140 ug/mL for Nabumetone. The linear equation for Nabumetone was  $y = 15262x - 23.3$ , where x represents the concentration of the drug and y represents the peak area. The correlation coefficient was 1.000 and the calibration curve of Nabumetone is depicted in figure 4. Linearity data for the Nabumetone is represented in table no. 02.

**Table No. 02: Linearity and range:**

<b>% Conc</b>	<b>Conc (ug/ml)</b>	<b>Nab AREA</b>
60%	60.00	914382
80%	80.00	1224309
100%	100.00	1525733
120%	120.00	1827682
140%	140.00	2138925





**Fig. 04: Calibration curve (linearity) of nabumetone**

**3.3. System Suitability:**

The system suitability was assessed by six replicate injections of the mixture containing as internal standard. The resolution, peak asymmetry, number of theoretical plates and HETP were calculated are represented in table no.03.

**Table No. 03: System Suitability:**

Sr. No.	Parameters	Nabumetone
1	Theoretical Plates	23509
2	Retention Time	2.88
3	Asymmetry factor	1.01

**3.4. Accuracy:**

Validation of Recovery Studies which is done statistically is represented in table no. 04 which shows the effects of Nabumetone. Recovery studies were carried out to ensure that the developed approach was accurate. The solution which is previously analyzed means the specific standard drug concentration 80, 100, and 120 percentages were mixed and then allowed for the recovery analysis. Recovery experiments at various concentration levels are used to verify the accuracy of the RP-HPLC and UV Spectrophotometric methods. The recovery rate was determined to be between 98 and 101%.

**Table No. 04: Accuracy of Nabumetone:**

Level of Recovery	Sample No. (ug/ml)	Spiked Amount	Spiked Amount wrt Sample	Area ATV	Amount Recovered (ug/ml)	%Recovery	% RSD
80%	Reps1(80)	79.76	79.76	1229830	80.38	100.78	0.45
	Reps2(80)	79.76	79.76	1224309	80.02	100.33	
	Reps3(80)	79.76	79.76	1218782	79.66	99.87	
100%	Reps1(100)	99.7	99.70	1528732	99.92	100.22	0.10
	Reps2(100)	99.7	99.70	1525733	99.72	100.02	
	Reps3(100)	99.7	99.70	1527638	99.85	100.15	
120%	Reps1(120)	119.64	119.64	1828782	119.53	99.91	0.05
	Reps2(120)	119.64	119.64	1827682	119.46	99.85	
	Reps3(120)	119.64	119.64	1826783	119.40	99.80	

**3.5. Precision:**

Intraday and inter-day precision investigations on the RP-HPLC method for nabumetone demonstrate high precision percent amounts ranging from 97 to 101 percent, indicating an analytical procedure that was concluded. Table no. 05 shows the results of intraday and inter-day precision experiments on the RP-HPLC technique for Nabumetone.

**Table No. 05: Precision for Nabumetone**

Instrument Precision	Peak Area
Parameter	ATV
Rep 1(50 ug/ml)	1529432
Rep 2(50 ug/ml)	1527204
Rep 3(50 ug/ml)	1527273
Rep 4(50 ug/ml)	1524395
Rep 5(50 ug/ml)	1520934
Rep 6(50 ug/ml)	1523246
<b>Average</b>	<b>1525414</b>

<b>SD</b>	<b>3118.117701</b>
<b>%RSD</b>	<b>0.20</b>

**3.6. Limit Detection:**

Depending on the standard deviation of response and slope, the limit of detection means LOD is detected. The LOD is the lowest limit that can be detected. The value of LOD of Nabumetone was observed as 0.613600684 (ug/mL), the analytical method that concluded.

$$\text{Limit of detection} = 3.3 \times 6032.658809 / 32444.185 = 0.613600684 \text{ (ug/mL)}$$

**3.7. Limit Quantification:**

The LOQ is that the lowest concentration which will be quantitatively measured. The value of LOQ for Nabumetone was observed as 0.613600684 (ug/mL) for the concluded method.

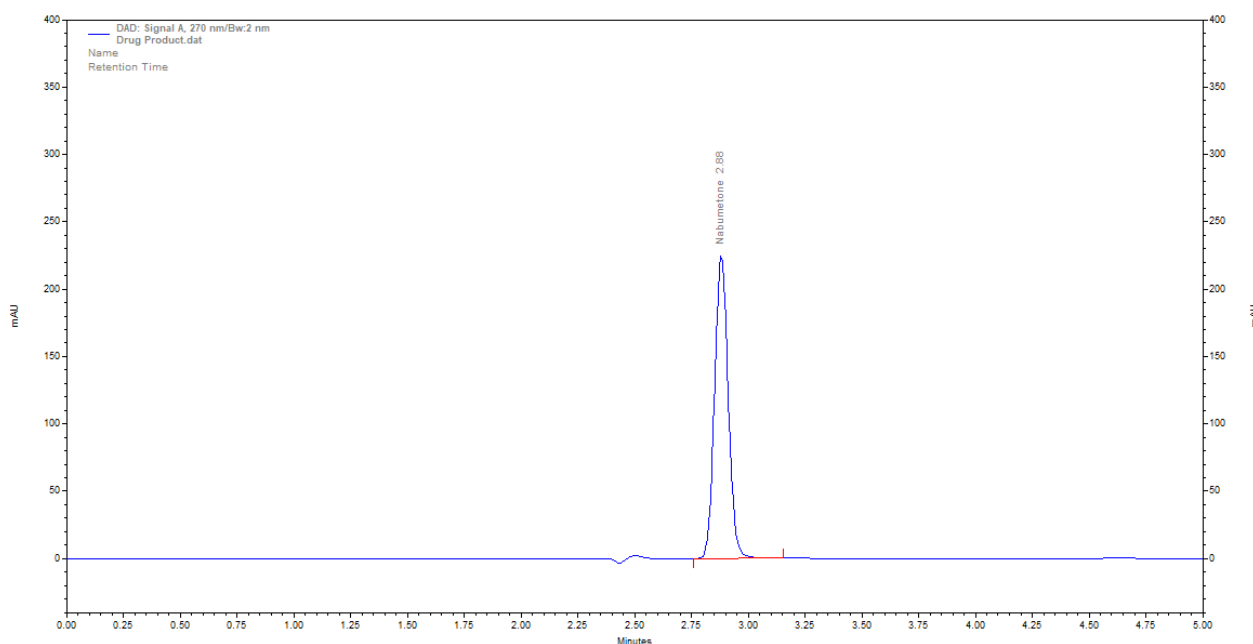
$$\text{Limit of Quantitation} = 10 \times 12.80 / 177.8 = 1.85939601 \text{ (}\mu\text{g/mL)}.$$

**3.8. Analysis of Tablet Formulation:**

The quantity of Nabumetone in each tablet was estimated by the extrapolation method by taking the value of area from the calibration curve. The process of Analysis procedure was done repeatedly about five times by using tablet formulation. For calculation of % Label claim and %RSD, tablet assay was estimated. In Table no. 06 and figure 05, results are represented. Brand Name Niltis tablet 500 mg (IPCA laboratories) was used for the analysis. The average weight of the tablets was 1.5328 gms /Tab. Its equivalent weight for 10 mg nabumetone would be  $100 \times 1.5328 / 500 = 0.0304$  grams. Hence, 167.6 mg in 10 ml water was taken and sonicated 10 min. Analysis of marketed formulation was analyzed and % Label Claim was observed as 100-101% which was concluded satisfactorily.

**Table 06: Analysis of marketed formulation:**

Assay	drug	mg	potency	% Label Claim	S.D.	%R.S.D.
RP-HPLC Method	Nabumetone	10	97.5	97.50	3118.117701	0.20



**Fig. 05: Chromatogram for Marketed Formulation**

**4. CONCLUSION:**

The developed new method proved to be simple in procedure and it produced more accurate results. Hence, the methods effective for the routine analysis of nabumetone in bulk and tablet dosage form. The simple, accurate and sensitive validated RP-HPLC method for simultaneous determination of Nabumetone has been developed. The method may be recommended for routine and quality control analysis of the investigated drugs in pharmaceutical formulations. The data demonstrate that the RP-HPLC method we have developed showed acceptable linearity, specificity, accuracy, precision and LOD & LOQ in the concentration range of 2-140 µg/ml for Nabumetone as per the requirement of ICH guidelines. In this study, stability of drug was established according to ICH-recommended stress conditions. In conclusion, the proposed method could be routinely used for the analysis of drug in pharmaceutical dosage form.

**REFERENCES:**

- [1]. <http://en.wikipedia.org/wiki/Nabumetone>
- [2]. United States Pharmacopoeia, 29th Ed., United States Pharmacopoeial Convention, Inc., Rockville, MD, USA, 2006.
- [3]. Murillo Pulgarin J A, Alanon Molina A and Alanon Pardo M T, Simplex Optimization and Kinetic Determination of Nabumetone in Pharmaceutical Preparations by Micellar-Stabilized Room Temperature Phosphorescence, *Analytica Chimica Acta*, 2005, 528, 77-82.
- [4]. S. Mallik Basha, G. Devala Rao, Ch. Manohar Babu, P. Bhaskara Rao, Ch. Hari Prasad, P. Sai Praveen, RP-HPLC Method for the Estimation of Nabumetone in Bulk and Pharmaceutical Formulations, *International Journal of Pharmacy and Pharmaceutical Sciences*, ISSN- 0975-1491 Vol 2, Suppl 4, 2010
- [5]. Can N. O., Tuncel M. and Aboul-Enein H. Y., Determination of Nabumetone in Pharmaceutical Formulation by Flow Injection Analysis (FIA) With UV-Detection *Pharmazie*, 2003, 58, 22-24
- [6]. Rao Y S, Chowdary K P R, Rao J V and Seshagiri L N, Simultaneous HPLC Determination of Nabumetone and Paracetamol in Combined Tablet Dosage Form, *Indian J Pharm Sci.*, 2003, 65, 206.
- [7]. Sahu Prafulla Kumar, Annapurna M. Mathrusri, Sahoo Dilip Kumar, A Simple and Sensitive HPLC Method for Simultaneous Analysis of Nabumetone and Paracetamol in Pharmaceutical Formulations, ISSN: 0973-4945; CODEN ECJHAO *E-Journal of Chemistry*, 8(S1), S41-S46, 2011.
- [8]. Sethi Neha, Anand Ankit, Chandrul Kaushal K., Jain Garima and Srinivas Kona S., Development and Validation of a Stability-Indicating RP-UPLC Method for the Quantitative Analysis of Nabumetone in Tablet Dosage Form, *Journal of Chromatographic Science* 2012;50:85–90; doi:10.1093/chromsci/bmr001
- [9]. Vyas A. J., Patel A. I., Sheth D. B. and Chavda J. R., Development and Validation of Stability-Indicating RP-HPLC Method for the Determination of Nabumetone, *Scholars Research Library Der Pharmacia Lettre*, 2014, 6 (6): Page no.: 366-372.
- [10]. A. J. Vyas, N. A. Aggarwal, B. P. Nagori, J. K. Patel, C. R. Jobanputra<sup>1</sup>, D. S. Viramgama, Simultaneous Estimation of Nabumetone and Paracetamol by Vierodt's Method in Combined Tablet Dosage Form, *International Journal of ChemTech Research*, CODEN (USA): IJCRGG ISSN: 0974-4290, Vol.2, No.1, Page No. 543-547.
- [11]. ROTE A. R. and BHALERAO S. R., Development and Statistical Validation of Spectrophotometric Methods for the Estimation of Nabumetone in Tablet Dosage Form, *E-Journal of Chemistry*, ISSN: 0973-4945; CODEN ECJHAO, <http://www.e-journals.net> 2010, 7(4), 1463-1467.
- [12]. Kamila Kobylinska, Malgorzata Barlinska, Maria Kobylinska, Analysis of Nabumetone in Human Plasma by HPLC Application to Single Dose Pharmacokinetic Studies, *Journal of Pharmaceutical and*

Biomedical Analysis, 32 (2003), 323-328. [13]. Sanjay Sawant, Vijaya Barge, A Validated Stability Indicating RP-HPLC Method for Nabumetone, Identification and Characterization of Forced Degradation Products of Nabumetone Using LC-MS/MS, Asian Journal of Chemistry; Vol. 25, No. 11 (2013), Page No. 6203-6208,

<http://dx.doi.org/10.14233/ajchem.2013.14319>.

[14]. Prafulla Kumar Sahu, M. Mathrusri Annapurna, Analysis of Nabumetone in Bulk and Tablet Formulation by a New and Validated Reverse Phase High Performance Liquid Chromatography, ISSN: 0973-4945; CODEN ECJHAO, E-Journal of Chemistry, <http://www.e-journals.net>, 2009, 6(S1), S59-S64.

[15]. Manwar G. G., Gajbhiye P. O., Jawarkar S. G., A Review on – Development and Validation of Stability-Indicating RP-HPLC Method for the Determination of Nabumetone, International Journal of Research and Analytical Reviews (IJRAR), (E-ISSN 2348-1269, P-ISSN 2349-5138), Volume 9, Issue 1, March 2022, Registration ID: IJAR\_244235, Paper ID: IJAR22A2324, Page No: 258-261, [http://www.ijrar.org/viewfull.php?&p\\_id=IJAR22A2324](http://www.ijrar.org/viewfull.php?&p_id=IJAR22A2324).

[16]. Kadam Deepali K, Mandalik Bhagyashree P and Deore Mahesh G, Development and Validation of Stability-Indicating RP- HPLC Method For Nabumetone, International Journal of Research in Pharmacy and Chemistry, ISSN: 2231-2781 IJRPC 2016, 6(1), 110-119.

[17]. Nobilis M, Holcapek M, Kolárová L, Kopecký J, Kuneš M, Svoboda Z and Kvetina J, Identification and determination of phase II nabumetone metabolites by high-performance liquid chromatography with photodiode array and mass spectrometric detection, J Chromatogram A, 2004, 1031(1-2), 229-236.

[18]. Al-Momani, I.F. Determination of Nabumetone And Its Major Metabolite in Plasma And Tablet Formulations by RP-HPLC. Analytical Letter, 1997, 30, 2485–2492.

[19]. International Conference on Harmonization (ICH) Q2 (R1), Validation of Analytical Procedures: Text and Methodology, 2005.

[20]. The European Medicines Agency, Pre-Authorization Evaluation of Medicines for Human Use, ICH Q2 (R1), Validation of Analytical Procedures: Text and Methodology, 2009, EMEA/410412/2007, London.

[21]. Plumb R.; Perez J.C.; Granger J.; Beattie I.; Joncour K.; Wright A., Ultra-performance liquid chromatography coupled to quadrupole-orthogonal time-of flight mass spectrometry. J. Rapid Commun. Mass Spectrom. 2004, 18, 2331–2337.

[22]. Wren S.A.C.; Tchlitcheff P., Use of ultra-performance liquid chromatography in pharmaceutical

development. *J. Chromatogr. A* 2006,1119, 140.

[23]. Wren S.A.C.; Tchlitcheff P., UPLC/MS for the identification of b-blockers. *J. Pharm. Biomed. Anal.* 2006, 40, 571–580.

[24]. L. R.; Dong L.; Huang J. Ultra-Performance Liquid Chromatography tandem Mass Spectrometry for the Determination of Epirubicin Inhuman Plasma, *Anal. Chim. Acta*, 2005, 546, 167–173.

[25]. Van Deemter J. J.; Zuiderweg E. J.; Klinkenberg A., Longitudinal diffusion and resistance to mass transfer as causes of non-ideality in chromatography. *Chem. Eng. Sci.* 1956, 5, 271–289.

[28]. Vane J.R.; Botting R.M., Mechanism of Action of Anti-Inflammatory Drugs, *Scandinavian J. Rheumatol*, 1996, 25, 9–21.

[29]. Friedel H.A.; Todd P.A., A Preliminary Review of Its Pharmacodynamic and Pharmacokinetic Properties, And Therapeutic Efficacy in Rheumatic Diseases, *Drugs.*, 1988, 35, 504–524.

[30]. Huang J.Q.; Sridhar S.; Hunt R.H.; Bjorkman D.J.; Mccarthy D.M., etc. Gastrointestinal Safety Profile of Nabumetone: A Meta-Analysis. Discussion. *Am. J. Med.* 1999, 107, 55S–64S.

[25]. Nageswara R.R.; Meena S.; Nagaraju D.; Rao A.R.R., Development and validation of a reversed-phase liquid chromatographic method for separation and simultaneous determination of COX-2 inhibitors in pharmaceuticals and its application to biological fluids. *Biomed. Chromatogram* 2004, 19, 362–368.

[26]. Mikami E.; Goto T.; Ohno T.; Matsumoto H.; Nishida M., Simultaneous Analysis of Naproxen, Nabumetone and its Major Metabolite 6-Methoxy-2-Naphthylacetic Acid In Pharmaceuticals And Human Urine By High-Performance Liquid Chromatography. *J. Pharmaceutical Biomed. Anal.* 2000, 23, 917–925.

[27]. Nobilis M, Kopecky J, Kvetina J, Svoboda Z, Pour M, Kunes J., Holcapek M. and Kolarova L., *Journal Pharm Biomed Anal.*,2003, 32, 641-656.

[28]. Q2 (R1) ICH guidelines, Validation of Analytical Procedures: Text and Methodology.

[29]. British Pharmacopoeia, Volume I, International Edition, HMSO Publication London, 1993, 483, 1808.ss[30]. Indian Pharmacopoeia, Volume II, The Controller of Publication, New Delhi, 1996, 554.

[31]. ICH, Q1A (R2)-Stability Testing of New Drug Substances and Products, International Conference on Harmonization, IFPMA, Geneva (2003).